

2J0202-C115N

2.4/5.0 GHz ISM Connector Mount

Key Features

- 2.4/5.0 GHz ISM
- 2410-2490 MHz
- 4920-5925 MHz
- Connector Mount
- Ground Plane Dependent
- High Gain
- Dimensions 56 x 9.5 mm



1. Antenna and electrical specifications

Parameters	2.4/5.0 GHz ISM Antenna	
Standards	WiFi, BT, ZigBee, ISM	
Band (MHz)	2.4 Ghz	5.0 Ghz
Frequency (MHz)	2410-2490	4920-5925
Return Loss (dB)	~-14.7	~-12.8
VSWR	~1.4:1	~1.7:1
Efficiency (%)	~60	~83
Peak Gain (dBi)	~4.0	~5.2
Average Gain (dB)	~-2.2	~-0.9
Impedance (Ohm)	50	
Polarisation	Linear	
Radiation Pattern	Omni-Directional	
Max. Input Power (W)	25	
Connector Type	Most RF Connectors (RP-SMA-Male Standard)	

Antenna Measurement Conditions:

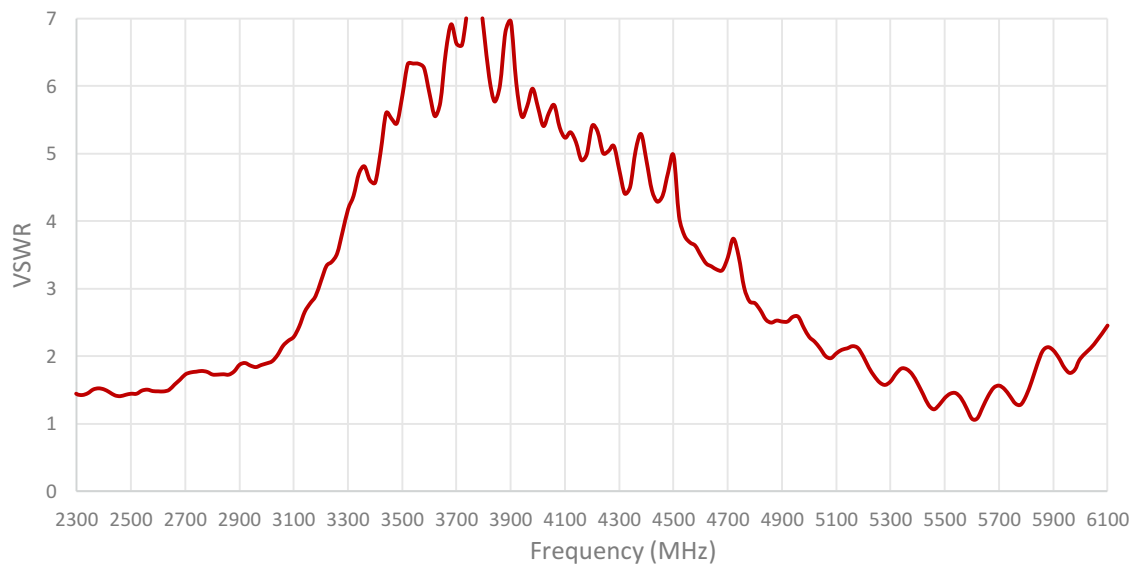
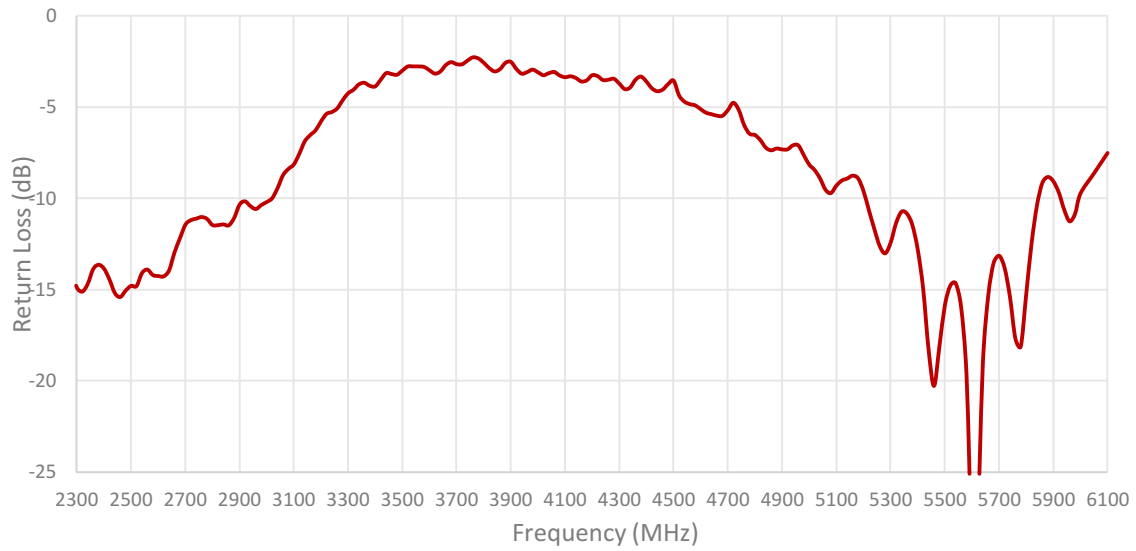
Mounted on Ground Plane of 70x35 mm

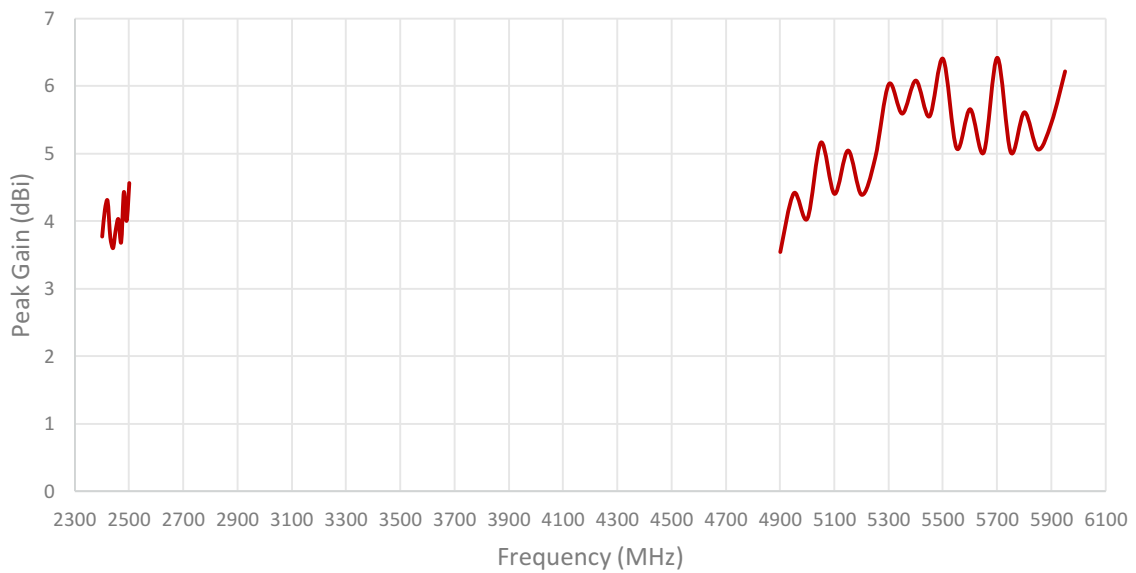
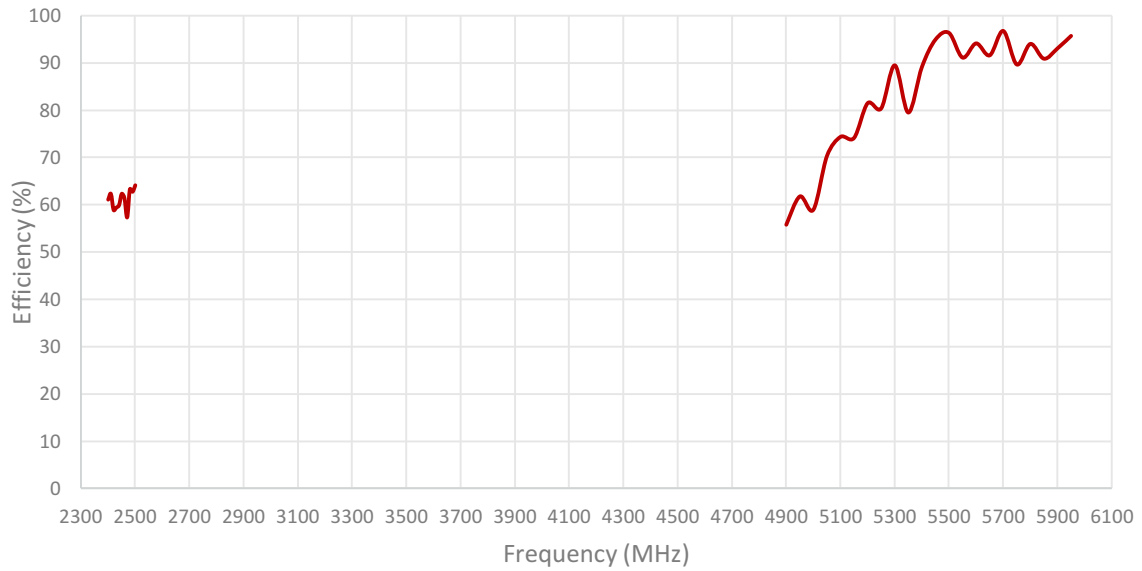
Measured in Certified CTIA 3D Anechoic Chamber

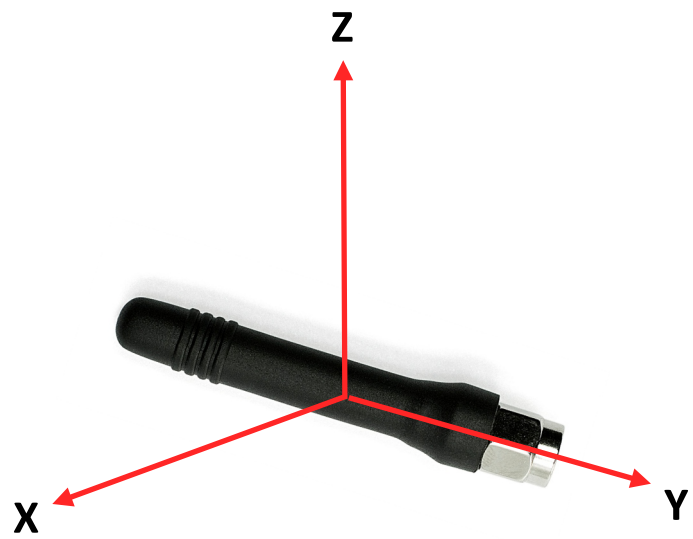
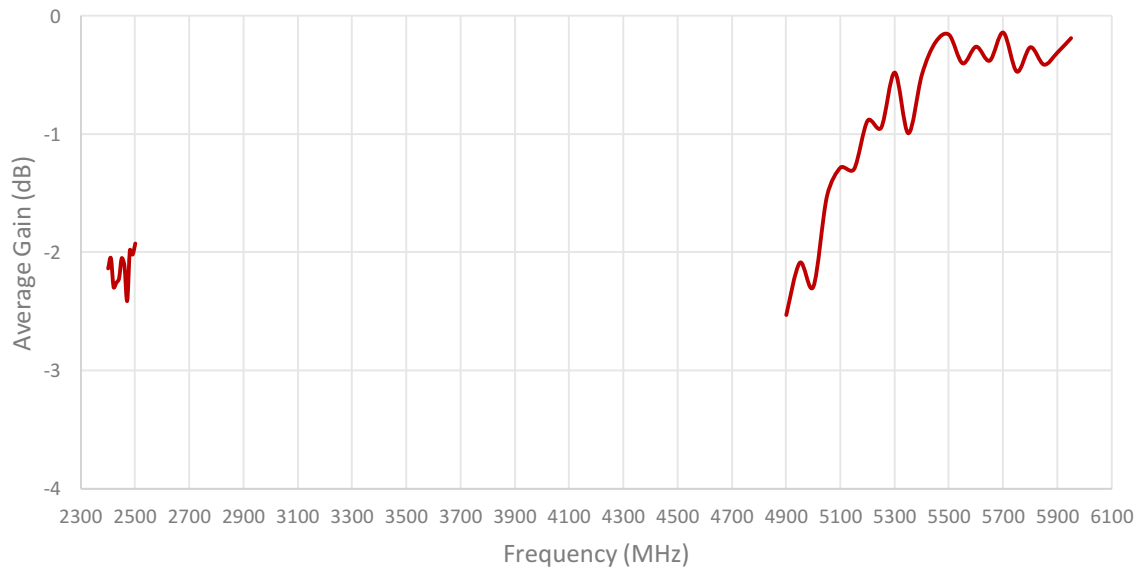
2. Mechanical and environmental specifications

Specifications	2J0202-C115N
Mounting Type	Connector Mount
Dimensions (mm)	56 x 9.5
Radome	ABS UV Stable
Radome color	Black
Operating Temperature (C)	-40 to +85
Storage Temperature (C)	-40 to +85
Substance Compliance	RoHS

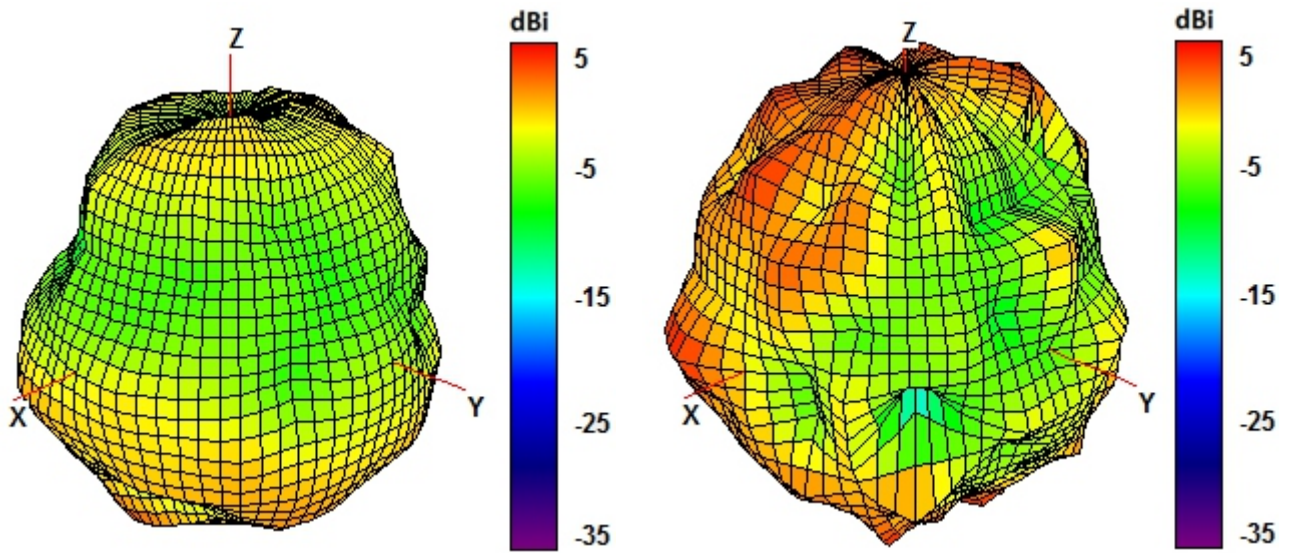
3. Antenna parameters





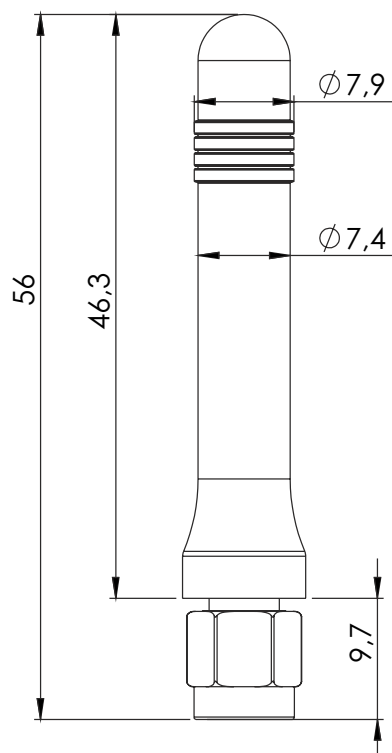
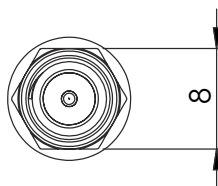


Radiation pattern reference



2450 and 5500 MHz Radiation pattern

4. Antenna drawings



5. Antenna Images

